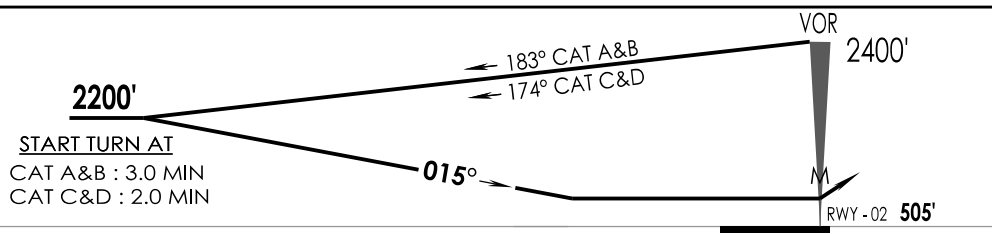
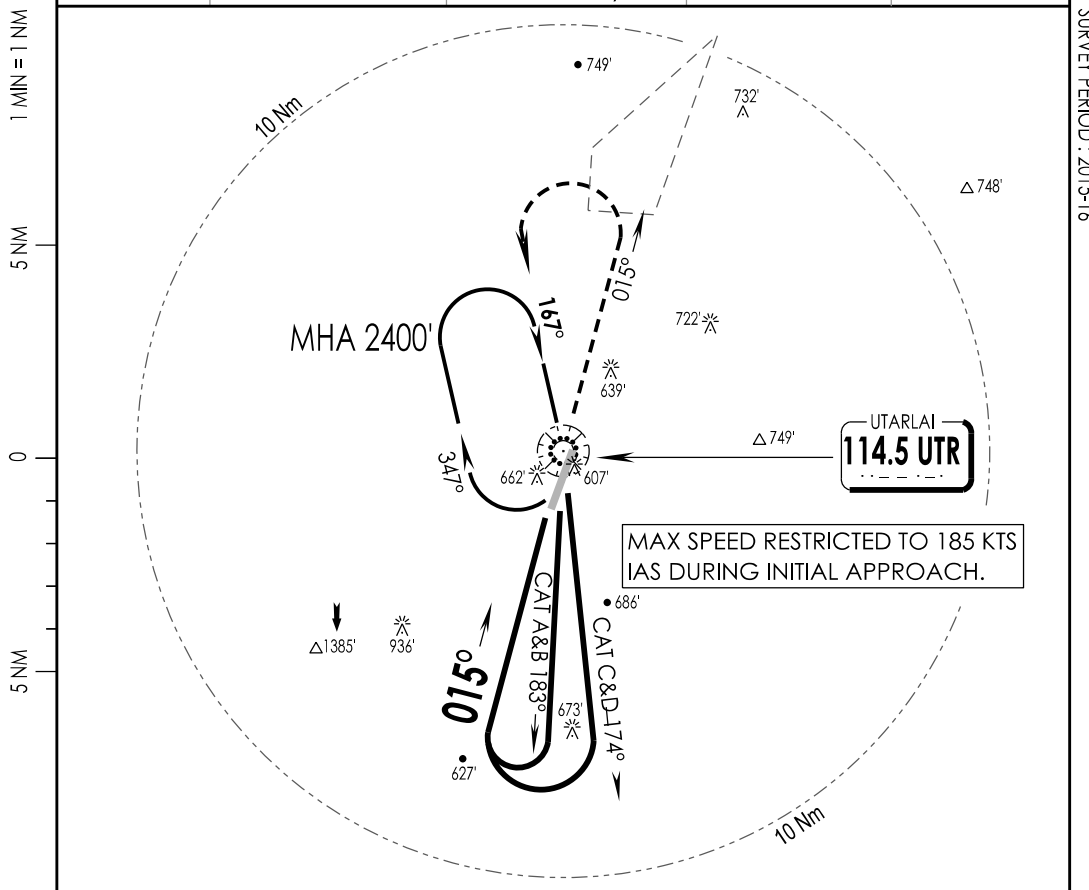


2-4

VIUT IAF UTTARLAI, INDIA
UTTARLAI 14 OCT 19 VOR Y RWY 02

UTTARLAI Tower 123.2, VC, UC	UTTARLAI Approach 123.2, VC, UC	ATIS 114.5	3500'
VOR UTR 114.5	FINAL Apch Crs 015°	MDA (H) 960' (455')	
Apt Elev 505'		RWY 505'	
MISSED APCH: Climb STRAIGHT ahead to 1600', then climbing Turn LEFT to join VOR hold at 2400' or as directed by ATC.			MSA UTR VOR
Alt Set: hPa	Rwy Elev: 17 hPa	Trans level: By ATC	



MAP AT VOR		↑ 1600'	2400' ↗
STRAIGHT-IN LANDING RWY 02		CIRCLE - TO - LAND	
non-CDFA MDA(H) 960' (455')		Max Kts	MDA (H) VIS
A	RVR 1900m	100	1170' (665') 3300m
B	RVR 2300m	135	
C	RVR 2100m	180	1330' (825') 3800m
D	RVR 2500m	205	

LIGHTING : CAT-II (20), SALS (02), PAPI (02/20)
CHANGES : NEW PROCEDURE IPDC, DTE OF OPS (T & H)